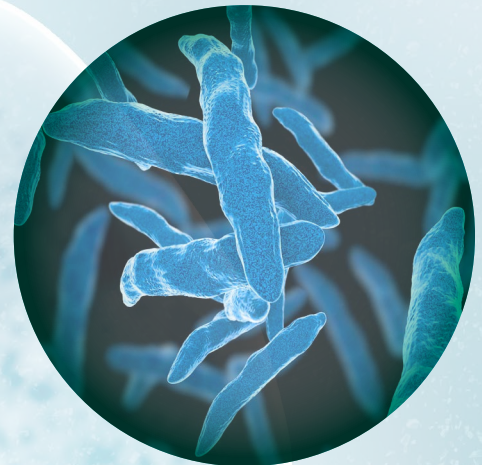




Prison Health: Managing Outbreaks of Tuberculosis in Prisons

**For prison healthcare staff; prison security staff;
other groups supporting people in prisons**

Course start date: 6th July 2020
Duration: 5 weeks
Study Time: 3 hours/week



**Course developed and delivered by Public Health England
The UK Collaborating Centre for the WHO Health In Prisons Programme**

Topics covered:

- Why tackling TB in prisons is an important public health measure
- General background on what TB is and how it impacts on the person in prison
- Challenges in outbreak management of TB in prisons
- How a whole prison approach is necessary for successful management
- Additional content - consideration of COVID-19 and TB symptoms

Course outcomes:

- Justify the importance of diagnosing and treating TB in prisons
- Identify the signs and symptoms of TB
- Discuss the prison-specific challenges of outbreak management of TB in prisons
- Reflect on examples of good practice
- Learning platform enables global networking and learning opportunities

Registration: <https://www.futurelearn.com/courses/tb-in-a-prison-setting/1>